

Tejo

A sofa system providing almost unlimited options, **Tejo** offers the freedom to either challenge or adhere to all types of spaces.

Tejo comprises three distinct main elements, each with a different depth: a bench, a single sofa, and a double back-to-back sofa.

Each material used in the construction of **Tejo** is harvested from nature. Choosing cork, natural latex and hemp fabrics, Tejo is built entirely from the ground up.

Key features

Easy to specify modular components

Three depth options, 23.5", 34.5" and 51.25" as standard

CAD and BIM files available

Available fully upholstered or exposed cork base

Various fabric colour options available

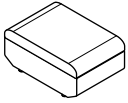
Available in 10-12 weeks (UK), 12-14 weeks (US)



How to specify

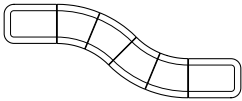
Tejo is a seating system that allows you to create the perfect piece by choosing from a host of individual modules and configurations. Modules come in three depths 23.5", 34.5" and 51.25". All modules within each size category are designed to be interchangeable.

Take a look at our predefined configurations. Add accessories such as privacy screens, planters, tables and power modules.



Step 1: Choose your depth

23.5", 34.5" or 51.25".



Step 2: Select your configuration

Choose from our recommended list of configurations or build your own by choosing from our different modules.



Step 3: Select your fabric

Select your fabric choice from our list of recommended fabrics.



Step 4: Select your optional extras and accessories

Select your optional extras and accessories such as power modules, planters, tables and privacy screens.



Tejo Configurations
23.5 Deep



Configuration 1

W51.25
D23.5
H15.5"



Configuration 2

W63
D23.5
H15.5"



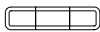
Configuration 3

W86.75
D23.5
H15.5"



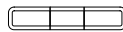
Configuration 4

W98.5
D23.5
H15.5"



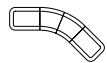
Configuration 5

W122
D23.5
H15.5"



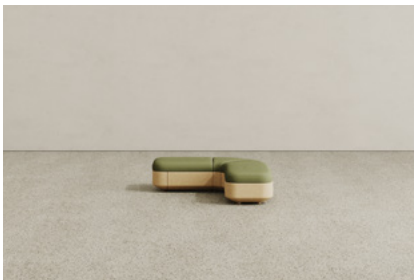
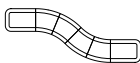
Configuration 6

W98.5
D56
H15.5"



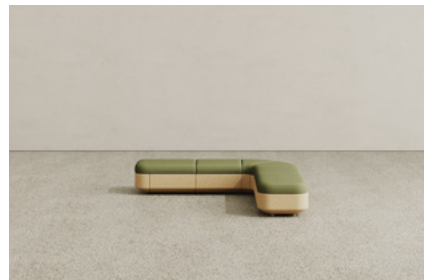
Configuration 7

W358.0
D56
H15.5"



Configuration 8

W61
D61
H15.5"



Configuration 9

W84.75
D84.75
H15.5"





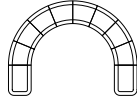
Configuration 10

W98.5
D98.5
H15.5"



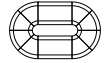
Configuration 11

W134
D98.5
H15.5"



Configuration 12

W94.5
D59
H15.5"



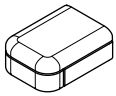
Configuration 13

W59
D59
H15.5"

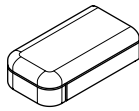


Tejo Modules

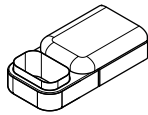
23.5 Deep



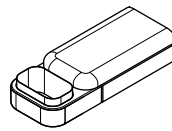
TS01-600S
Left End
W31.5
D23.5
H15.5"



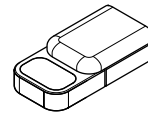
TS01-600L
Left End
W43.5
D23.5
H15.5"



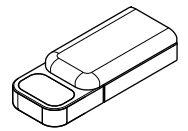
TS02-600S
Left End with Planter
W47.25
D23.5
H15.5"



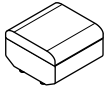
TS02-600L
Left End with Planter
W59
D23.5
H15.5"



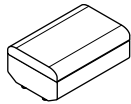
TS03-600S
Left End with Table
W47.25
D23.5
H15.5"



TS03-600L
Left End with Table
W59
D23.5
H15.5"



TS04-600S
Straight
W23.5
D23.5
H15.5"



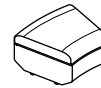
TS04-600L
Straight
W35.5
D23.5
H15.5"



TS05-600
Straight Planter
W17.75
D23.5
H14.25"



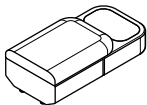
TS06-600
Straight Table
W17.75
D23.5
H11.25"



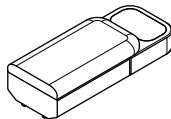
TS07-600
Angle 22.5°
W37
D23.5
H15.5"



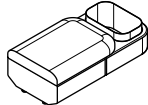
TS08-600
Angle 45°
W43.5
D23.5
H15.5"



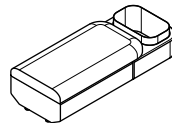
TS09-600S
Right End with Table
W47.25
D23.5
H15.5"



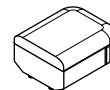
TS09-600L
Right End with Table
W59
D23.5
H15.5"



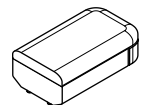
TS10-600S
Right End with Planter
W47.25
D23.5
H15.5"



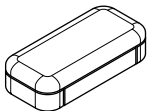
TS10-600L
Right End with Planter
W59
D23.5
H15.5"



TS11-600S
Right End
W31.5
D23.5
H15.5"



TS11-600L
Right End
W43.5
D23.5
H15.5"



TS12-600
Island
W51.25
D23.5
H15.5"



Tejo Configurations

34.5 Deep



Configuration 1

W86.75
D34.5
H15.5/28.25"



Configuration 2

W122
D34.5
H15.5/28.25"



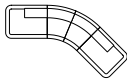
Configuration 3

W157.5
D34.5
H15.5/28.25"



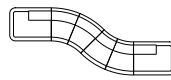
Configuration 4

W126.75
D75.5
H15.5/28.25"



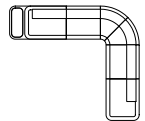
Configuration 5

W172.25
D70
H15.5/28.25"



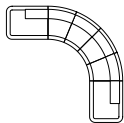
Configuration 6

W135
D119
H15.5/28.25"



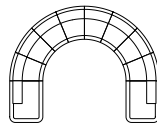
Configuration 7

W121
D121
H15.5/28.25"



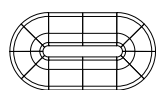
Configuration 8

W155.5
D121
H15.5/28.25"



Configuration 9

W151.75
D80.75
H15.5/28.25"





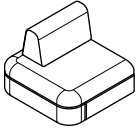
Configuration 10

W80.75
D80.75
H15.5/28.25"



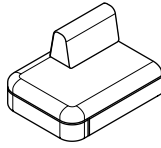
Tejo Modules

34.5 Deep



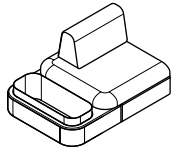
TS01-875S

Left End
W31.5
D34.5
H15.5/28.25"



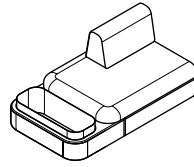
TS01-875L

Left End
W43.5
D34.5
H15.5/28.25"



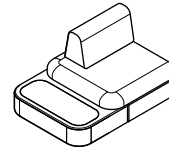
TS02-875S

Left End with Planter
W47.25
D34.5
H15.5/28.25"



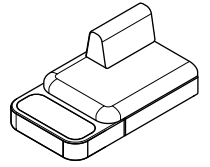
TS02-875L

Left End with Planter
W59
D34.5
H15.5/28.25"



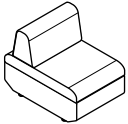
TS03-875S

Left End with Table
W47.25
D34.5
H15.5/28.25"



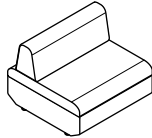
TS03-875L

Left End with Table
W59
D34.5
H15.5/28.25"



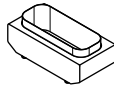
TS04-875S

Straight
W23.5
D34.5
H15.5/28.25"



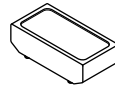
TS04-875L

Straight
W35.5
D34.5
H15.5/28.25"



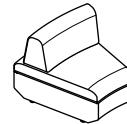
TS05-875

Straight Planter
W17.75
D34.5
H14.25"



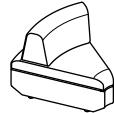
TS06-875

Straight Table
W17.75
D34.5
H11.25"



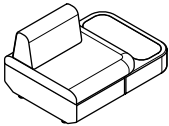
TS07-875

Angle 22.5°
W37
D34.5
H15.5/28.25"



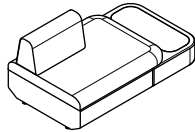
TS08-875

Angle 45°
W43.5
D34.5
H15.5/28.25"



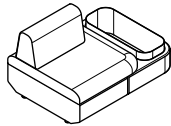
TS09-875S

Right End with Table
W47.25
D34.5
H15.5/28.25"



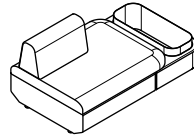
TS09-875L

Right End with Table
W59
D34.5
H15.5/28.25"



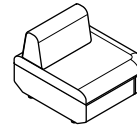
TS10-875S

Right End with Planter
W47.25
D34.5
H15.5/28.25"



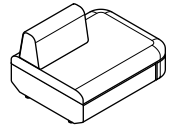
TS10-875L

Right End with Planter
W59
D34.5
H15.5/28.25"



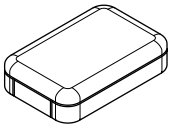
TS06-875S

Right End
W31.5
D34.5
H15.5/28.25"



TS06-875L

Right End
W43.5
D34.5
H15.5/28.25"



TS12-875

Island
W51.25
D34.5
H15.5"

Illustrations above relate to the product at 28.25" with backrest.

Standard modules do not include backrest.



Tejo Configurations

51.25 Deep



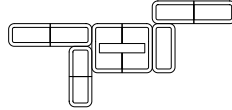
Configuration 1

W173.25
D51.25
H15.5/28.25"



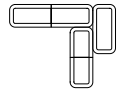
Configuration 2

W23.50
D110.25
H15.5/28.25"



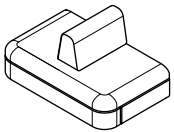
Configuration 3

W110.25
D86.75
H15.5"



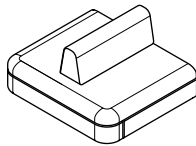
Tejo Modules

51.25 Deep



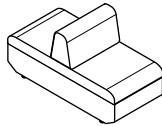
TS01-1300S

Left End
W31.5
D51.25
H15.5/28.25"



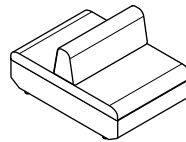
TS01-1300L

Left End
W43.5
D51.25
H15.5/28.25"



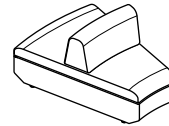
TS02-1300S

Straight
W23.5
D51.25
H15.5/28.25"



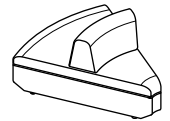
TS02-1300L

Straight
W35.5
D51.25
H15.5/28.25"



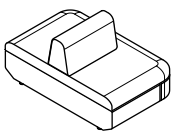
TS03-1300

Angle 22.5°
W36.75
D51.25
H15.5/28.25"



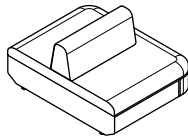
TS04-1300

Angle 45°
W43.5
D51.25
H15.5/28.25"



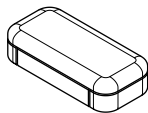
TS05-1300S

Right End
W31.5
D51.25
H15.5/28.25"



TS05-1300L

Right End
W43.5
D51.25
H15.5/28.25"



TS06-1300

Island
W51.25
D23.5
H15.5"

Illustrations above relate to the product at 28.25" with backrest.

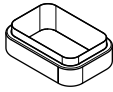
Standard modules do not include backrest.



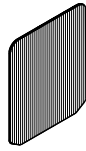
Optional Extras



TP600
Planter
W23.5
D23.5
H14.25"



TP875
Planter
W23.5
D34.5
H14.25"



TS01
Screen Divider
W44.5
H37"



TPM
Power Module
W3ø

Accessories



TT620L
Table
W24.5ø
H12"



TT620S
Table
W24.5ø
H9.75"



TT450S
Table
W17.75ø
H12"



TT450L
Table
W17.75ø
H15.75"



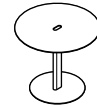
MT400
Metal Table
W15.75ø
H25.75"



MT450
Metal Table
W17.75
D13.75
H25.75"



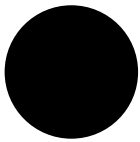
MT600S
Metal Table
W23.5ø
H15"



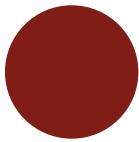
MT600L
Metal Table
W23.5ø
H17.75"

Planter and Metal Table Finishes

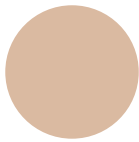
Powder Coat Colours



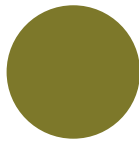
Black
RAL 9005



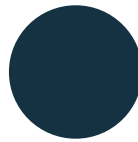
Oxide Red
RAL 3009



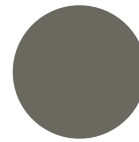
Amber Grey
RAL 050 70 20



Kirchner Green
RAL 110 40 40



Black Blue
RAL 5004



Moss Grey
RAL 7003



Grey White
RAL 9002



Warranty

Isomi soft seating carries a 5 year warranty. For further details please refer to our Terms and Conditions.

Maintenance

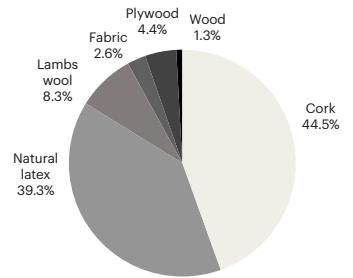
Maintaining a clean cork surface is essential for its longevity. Use CORKGUARD cleaner, ensure dryness, then apply undiluted maintenance base evenly for optimal protection.

For the Tejo cork seat to maintain its pristine appearance, we advise regular, gentle vacuuming. Should any spills occur, prompt blotting with an absorbent cloth is recommended. When using cleaning products, exercise caution and adhere to the manufacturer's guidelines.

Materials

Upholstery frame:	Cork
Upholstery:	Natural latex cushion
Wadding:	Lambs wool
Fabric:	Available in wide range of sustainable selected fabrics
Seat base:	Plywood formaldehyde free
Feet:	Ash wood

*Calculations are based on a standard middle module with backrest



Environmental Information

Our mission is simple, to create furniture of the highest standards in terms of design, quality and durability that enriches life today without compromising tomorrow.

To make Tejo, Isomi uses waste cork from the production of wine stoppers. Blocks of recycled cork are cut to size and shaped by hand. Waste is minimal, and any offcuts or dust generated in the process are simply returned to the beginning of the process and remade into cork blocks – a zero-waste production cycle.

The product does not contain surfactants. It is not based on PFAS, PFOA or PFOS chemistry and it does not degrade to these substances.

Tejo features a frame crafted entirely from 100% recycled cork bonded with a solvent-free binder. At the end of its life cycle, cork can undergo mechanical recycling to create new agglomerate or be composted to enhance soil quality.

Cork oak forests are biodiversity hubs, comparable in richness to rainforests. Maximizing the utilization of cork waste not only enhances the worth of this material but also promotes the conservation of cork oak forests.

Natural latex is ethically sourced from rubber trees, ensuring sustainability through harmless tapping methods. This provides a positive reduction in greenhouse gases. Natural latex offers unparalleled comfort as an upholstery filling, setting it apart from other traditional fillings.

Flax, hemp, and wool fabrics are both biodegradable and renewable. Flax, derived from plant fibres, offers durability with minimal water and pesticide use. Hemp fabric requires minimal resources and enriches soil health, while its versatility extends to various applications. Wool, a renewable and biodegradable material, provides natural insulation and odour resistance, reducing energy consumption and extending garment lifespans.

Fabrics

We offer a select range of fabrics that have been chosen for their sustainable properties as well as offering a choice of colours and textures.

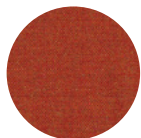
MAINLINE FLAX - Mainline flax is made from all natural fibres, pure wool and flax, to create a multi-tonal, inherently flame-retardant fabric. 75% wool, 25% flax. Mainline Flax is certified to the EU Ecolabel and Indoor Advantage™ Gold.

MAINLINE TWIST - Mainline Twist is woven from a blend of wool and flax. It has a tweed effect textile with a handwoven appearance. Inherently flame-retardant fabric. 75% wool, 25% flax. Mainline Twist is Certified to the EU Ecolabel Indoor Advantage™ Gold. It is renewable and compostable and made from wool and plant fibre.

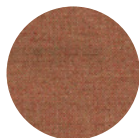
HEMP - Hemp is woven from a blend of pure wool and hemp. With a soft handle and inherent flame retardancy, this sustainable textile has a classic plain weave. 70% Virgin Wool, 30% True Hemp. Hemp is certified to the EU Ecolabel and Indoor Advantage™ Gold.

BLAZER -Blazer is a wool felt fabric made from premium New Zealand lambswool. It is natural and renewable, backed by an independently verified Environmental Product Declaration and certified to the EU Ecolabel.

Mainline Flax - Camira Fabrics



Leyton
MLF13



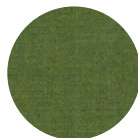
Alperton
MLF43



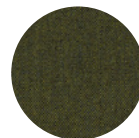
Goldhawk
MLF31



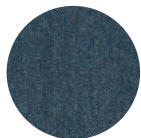
Tooting
MLF17



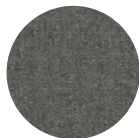
Tufnell
MLF18



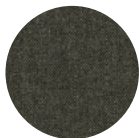
Kentish
MLF56



Clapham
MLF49



Watford
MLF65



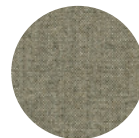
Temple
MLF16



Redbridge
MLF61

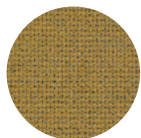


Shadwell
MLF63

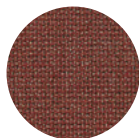


Archway
MLF02

Mainline Twist - Camira Fabrics



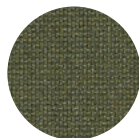
Fold
MLT01



Cone
MLT02



Fibre
MLT05



Creel
MLT09



Hank
MLT13

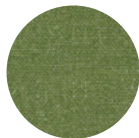


Spin
MLT12

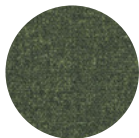
Hemp - Camira Fabrics



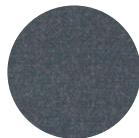
Oat
HWP05



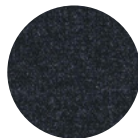
Acre
HWP19



Hectare
HWP21



Fallow
HWP28



Barn
HWP23

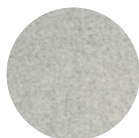


Sickle
HWP30

Blazer - Camira Fabrics



Dartmouth
CUZ2Q



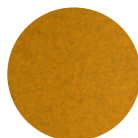
Silverdale
CUZ28



St Andrews
CUZ86



Plymouth
CUZ1R



Wesley
CUZ82



Kingsmead
CUZ67

Alternative colours are available on request. For a full list of colour options please download our colour chart. The printed representation of colours may vary from actual samples. Always request actual samples before ordering.
